

# learning assessment design deck

Design effective learning assessment

# learning assessment design deck

v. 1.0 | Printable Version

The **Learning Assessment Design Deck** by Imaginary Institute is licensed under CC BY 4.0. Print your own version of the deck. All you need is a few sheets of paper and a printer. Once cut, it can be used individually or in teams.

## How to print the Deck

The easiest way to print the cards is to use A4 sheets and configure the printing options to have 4, 6 or 9 cards per page (depending the size you prefer). Here's how to do it.

### Mac OS

1. Open the Deck PDF file with Preview
2. Click on **File>Print**
3. Select **A4** as Paper Size and **Horizontal** as Orientation
4. Click **Preview** on the Dropdown menu and select Layout (see fig. 1)
5. Select 4, 6 or 9 in the **Pages per Sheet** Dropdown menu (see fig. 2)
6. Print, cut and start using the cards!

### PC/Windows

1. Open the Deck PDF file with Acrobat Reader (or other PDF readers)
2. Click on the Print Icon
3. Select A4 as Paper Size and Horizontal as Orientation (see fig. 3)
4. Click **Multiple** in the Page Sizing & Handling Section
5. Select **4, 6 or 9** in the **Pages per Sheet** Dropdown menu (see fig. 4)
6. Print, cut and start using the cards!

### TIP

Please use **heavy paper** (e.g. 300g/m<sup>2</sup>) with matte coating and high quality color printing for the best user experience.

# learning assessment design deck

v. 1.0 | Printable Version

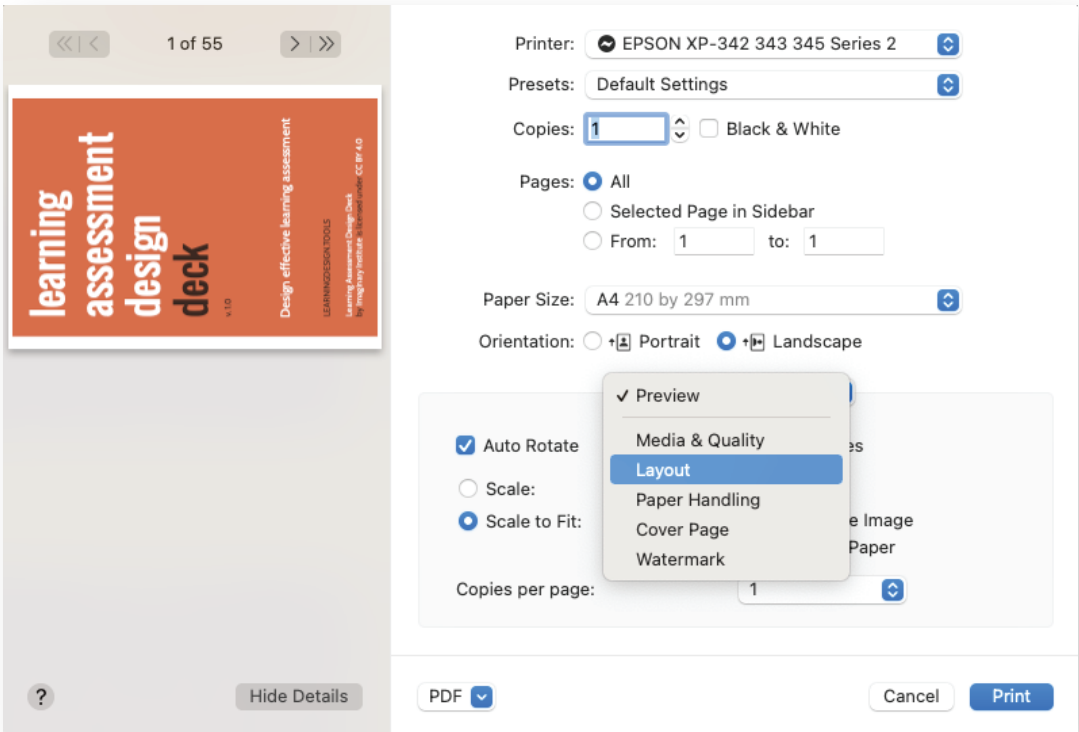


fig. 1

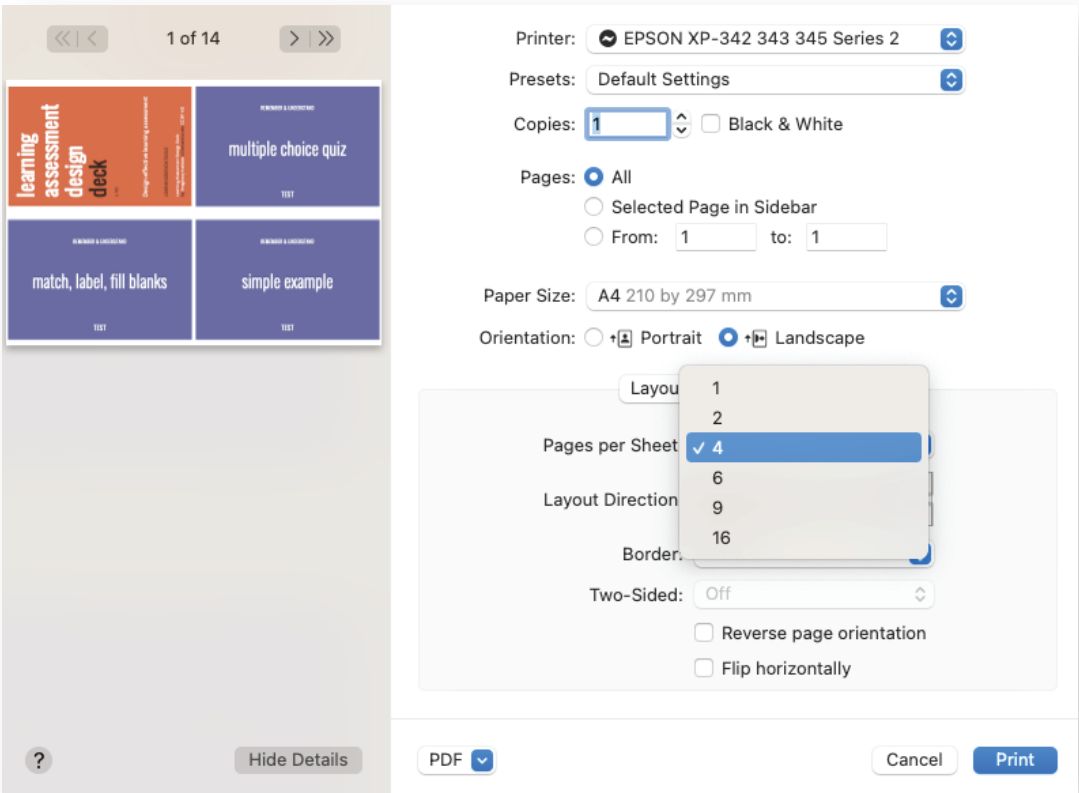


fig. 2

# learning assessment design deck

v. 1.0 | Printable Version

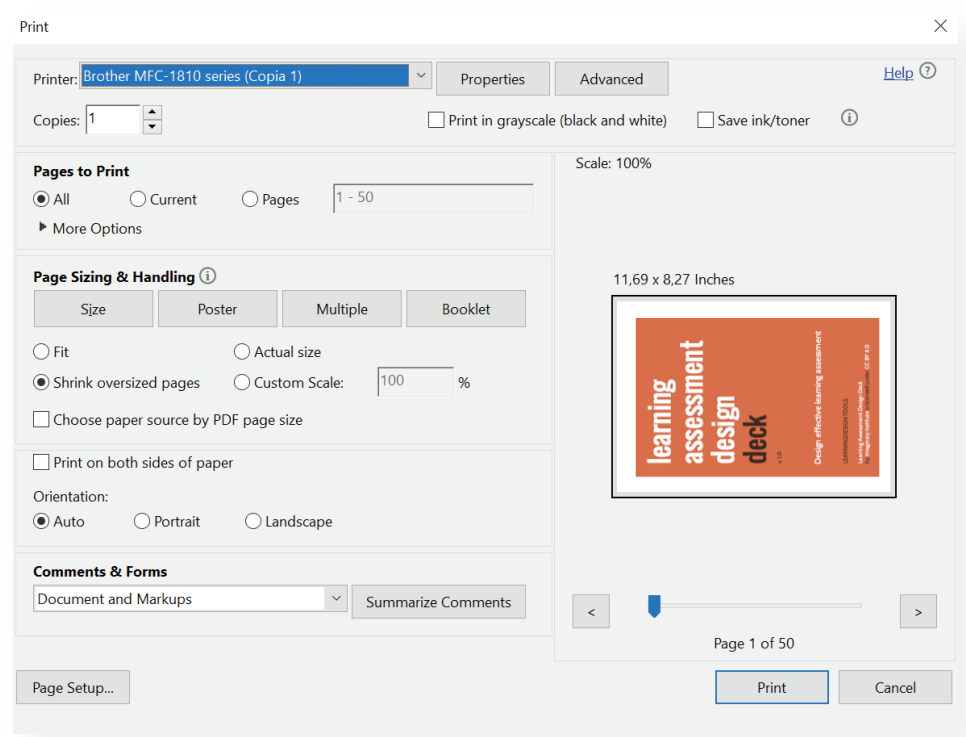


fig. 3

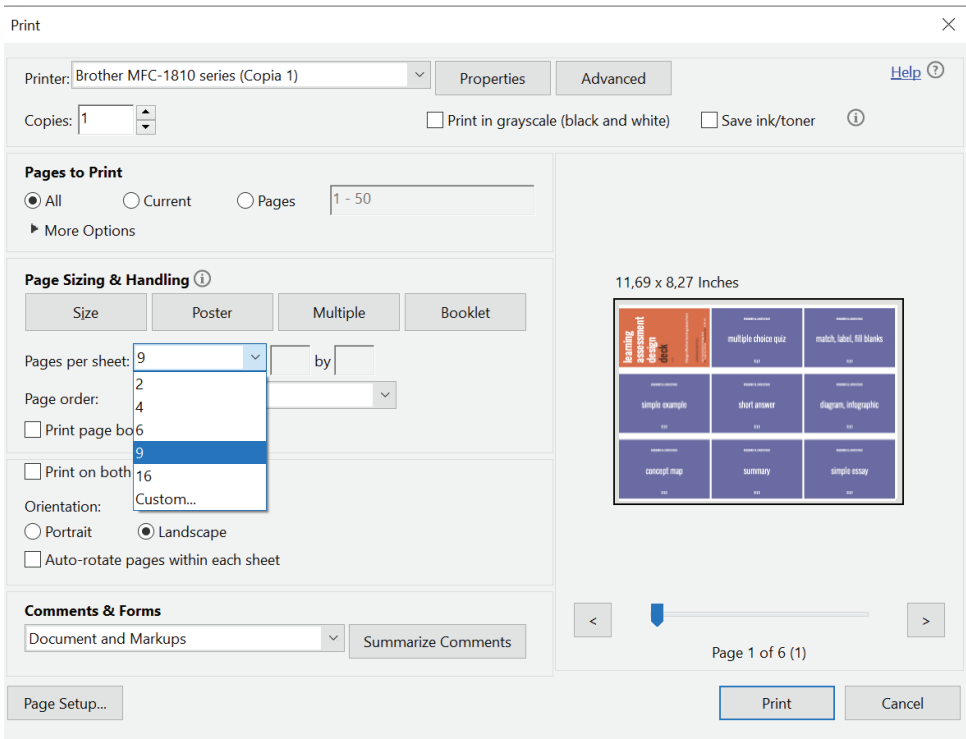


fig. 4

# learning assessment design deck

v. 1.0

Use the Learning Assessment Design Deck to plan effective assessment strategies that are constructively aligned to learning outcomes for any educational context. The deck is based on the well established Bloom's Taxonomy and provides an interactive approach to curriculum design to ensure conceptual and procedural consistency.

For more information and how to use the deck, visit [learningdesign.tools](https://learningdesign.tools)